

# Wall-mounted air heaters for outdoor installation

## MEC EX C

for ducted outdoor installation

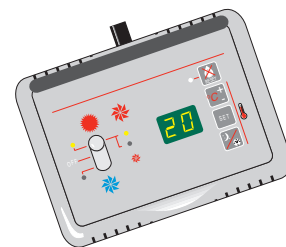
**MEC EX** wall-mounted air heaters have been specifically designed and certified for outdoor installation. The units are equipped with centrifugal fans and electrical components specifically designed for outdoor use.

If regulations in force do not permit installation inside the area to be heated - because of the activities performed in the area or the nature of the materials contained therein - **MEC EX C** units can be installed on the outside close to the wall of the building. Depending on how applicable regulations classify the activities performed in the area where the air heaters are to be used, several different system set-ups are possible such as the use of fire barrier air locks, recirculation of inside air, total outside air intake, filtration, mixing, etc. These solutions can be achieved by using the accessories available on request. **MEC EX C** air heaters are equipped with a connector for the delivery duct (\*), a connector for the air intake duct complete with grate (\*\*), a fume exhaust kit, and a combustion air intake kit.

The standard electronic control panel is connected to the unit through a 10 m cable. It makes the unit easy to use and lets you safely control operating and environmental parameters.

The unit provides the following functions:

- heating / off / summer ventilation
- digital display showing environmental temperature or temperature setting
- electronic timer for turning fans on and off
- reset button
- desired temperature setting
- on and lockout warning lights
- two-stage temperature to be set in automatic or manual mode



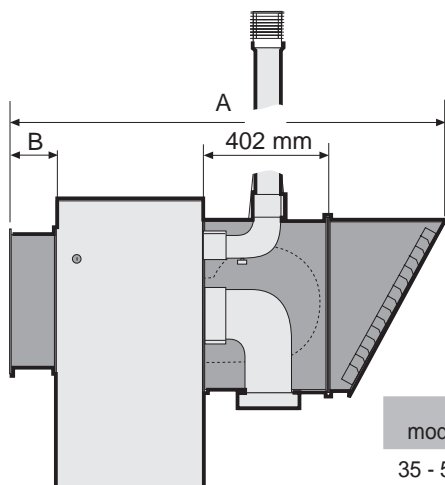
Model	nominal thermal power		thermal power		
	kW	kcal/h	kW	kcal/h	
<b>MEC 35 EX C</b> for ducted outdoor installation with centrifugal fan <b>code 30240000</b>	<b>34.8</b>	<b>29,900</b>	<b>31.9</b>	<b>27,400</b>	<b>2.480.00</b>
<b>MEC 57 EX C</b> for ducted outdoor installation with centrifugal fan <b>code 30340000</b>	<b>57.0</b>	<b>49,000</b>	<b>51.6</b>	<b>44,380</b>	<b>3.820.00</b>
<b>MEC 85 EX C</b> for ducted outdoor installation with centrifugal fan <b>code 30390000</b>	<b>85.0</b>	<b>73,100</b>	<b>75.6</b>	<b>65,050</b>	<b>5.800.00</b>

(\*) Connector for delivery duct:

code 30192200 (MEC 35 EX C) value  $\square$  135.00  
 code 30292200 (MEC 57 EX C) value  $\square$  149.00  
 code 30392200 (MEC 85 EX C) value  $\square$  211.00

(\*\*) Connector for intake duct complete with filter:

code 30242250 (MEC 35 EX C) value  $\square$  190.00  
 code 30342250 (MEC 57 EX C) value  $\square$  289.00  
 code 30392250 (MEC 85 EX C) value  $\square$  380.00



mod.	A	B
35 - 57	1.386	167
85	1.345	102

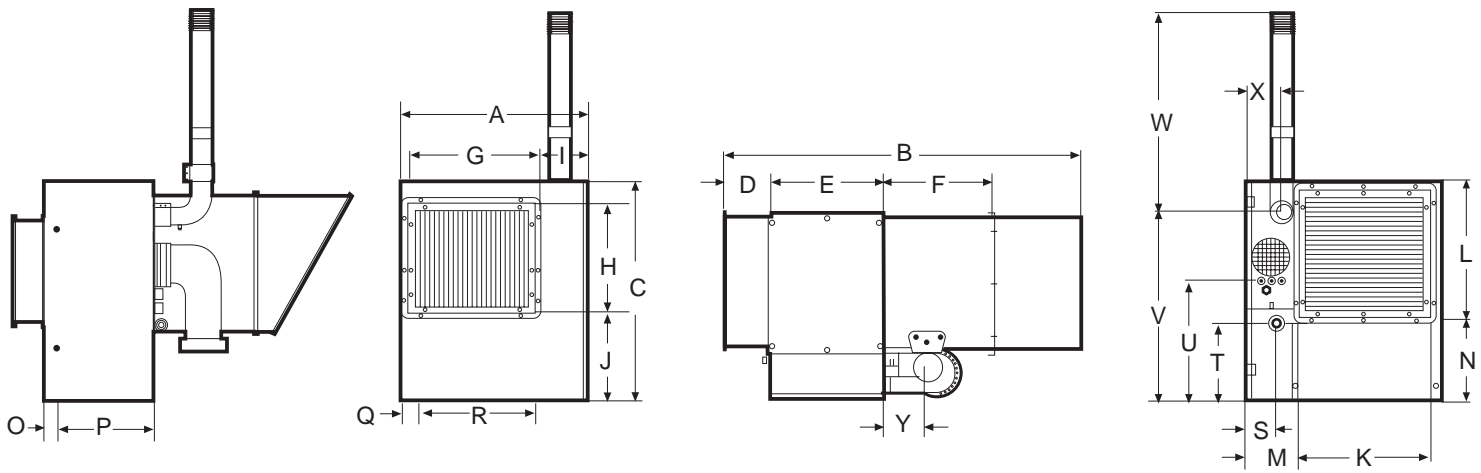
- CE approved for outdoor installation
- Degree of casing protection IP 44
- Five-year warranty (combustion chamber, burner and heat exchanger)

*Plus*

Air heaters come equipped with:

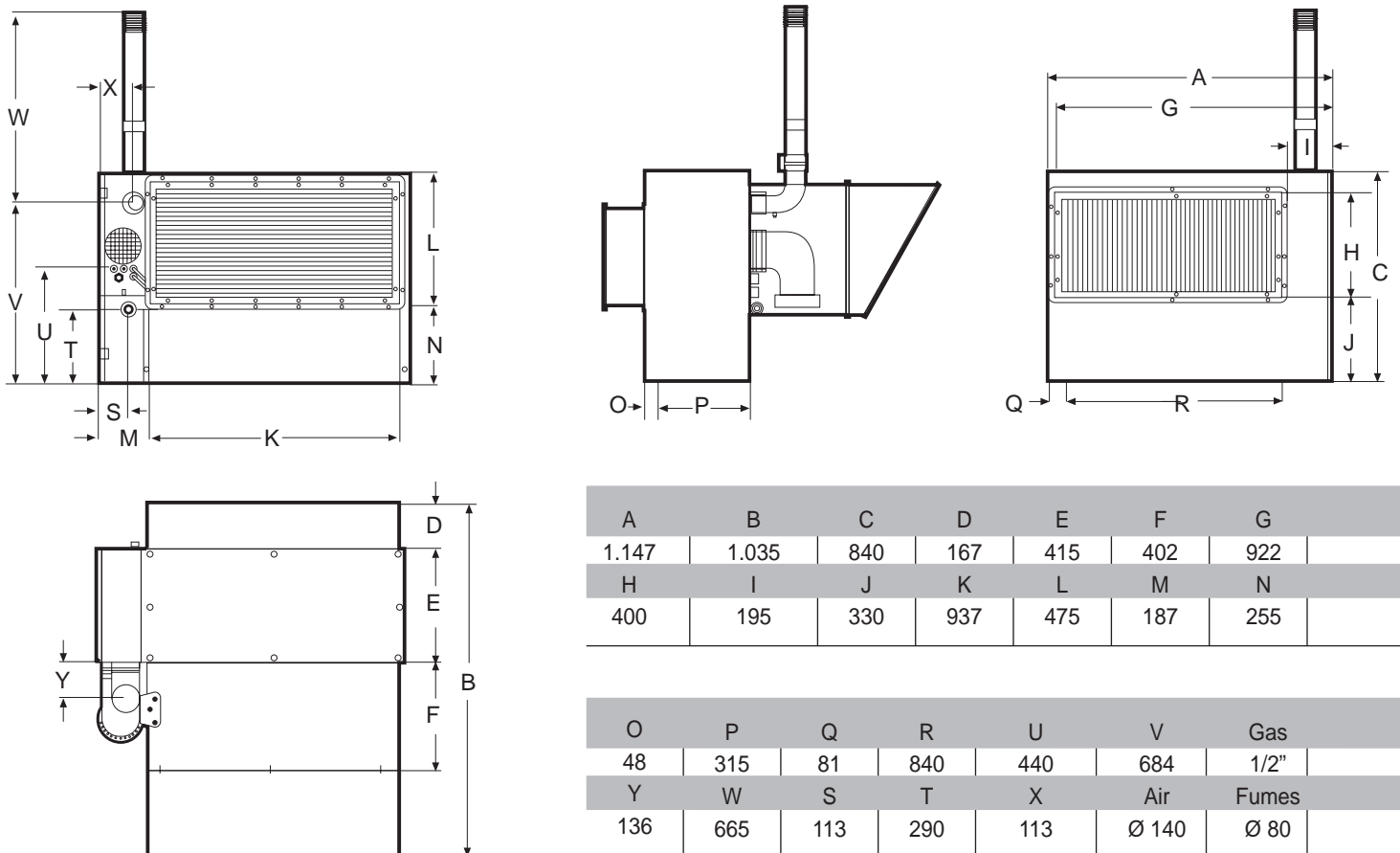
- connector for delivery duct
- horizontal air intake duct
- inclined air intake duct complete with grate
- fume exhaust kit
- combustion air intake kit
- remote control panel complete with sheath and electric cable (length 10 m)

# Model MEC 35 EX C



A	B	C	D	E	F	G	H	I	J	K	L	M	N
695	1.386	840	167	415	402	470	400	195	330	470	472	187	305
O	P	Q	R	S	T	U	V	W	X	Y	Air	Fumes	Gas
48	315	76	398	113	283	440	695	685	120	160	Ø 140	Ø 80	1/2"

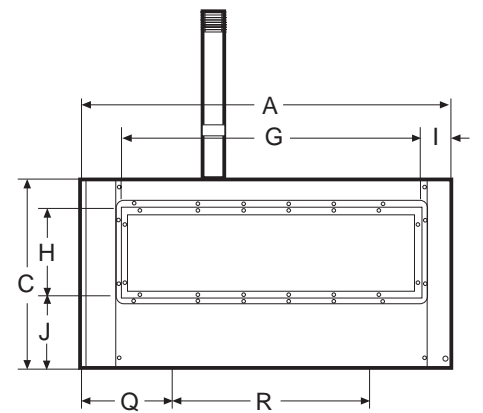
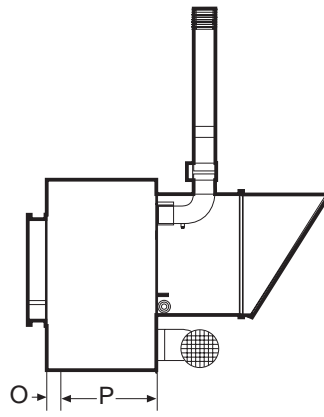
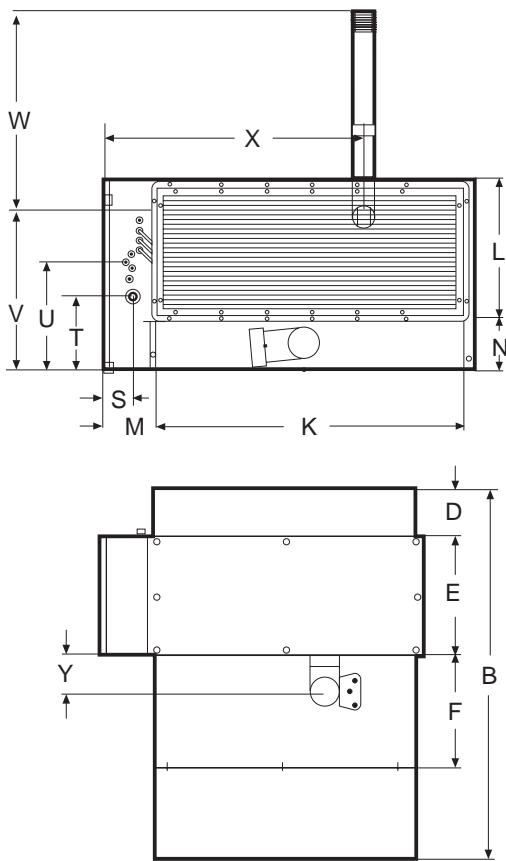
# Model MEC 57 EX C



A	B	C	D	E	F	G
1.147	1.035	840	167	415	402	922
H	I	J	K	L	M	N
400	195	330	937	475	187	255

O	P	Q	R	U	V	Gas
48	315	81	840	440	684	1/2"
Y	W	S	T	X	Air	Fumes
136	665	113	290	113	Ø 140	Ø 80

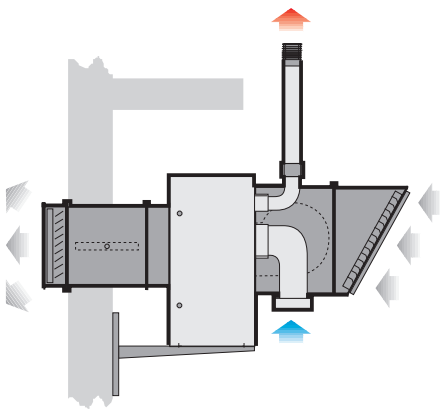


A	B	C	D	E	F	G
1.748	1.345	870	102	480	402	1.360
H	I	J	K	L	M	N
400	195	330	1.450	545	160	255

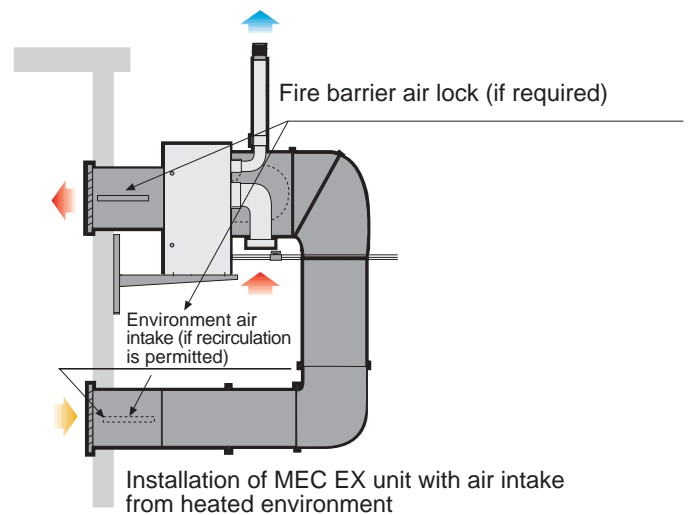
O	P	Q	R	S	T	U
48	315	424	900	113	353	515
V	W	X	Y	Air	Fumes	Gas
715	665	1.133	136	Ø 140	Ø 100	1/2"

Examples of installations



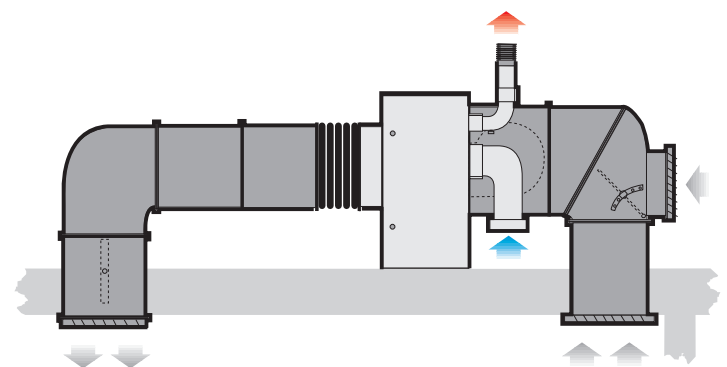
Side view of MEC 35 EX installation with free air delivery into the environment, fire barrier air lock, grate with double row of adjustable fins, total outside air intake designed to accept filter, and exhaust duct extended with duct complete with clamp and gasket. Installation carried out by using the following accessories:

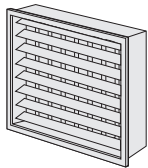
- fire barrier air lock REI 120
- air delivery grate with double row of adjustable fins
- air intake filter
- support shelf



Side view of MEC 57 EX roof installation (ROOF TOP) with ducted air delivery, fire barrier air lock and vibration damper. Ducted inside and outside air intake with calibration air lock (\*). (\*) in order to connect intake duct to standard duct "A", the grate should be disassembled. The grate can be used for environment air intake. Installation carried out by using the following accessories:

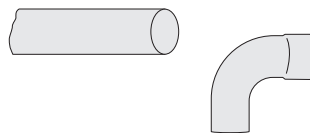
- fire barrier air lock REI 120
- vibration damper





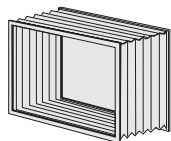
air delivery grate with double row of adjustable fins

model	
35 code 30172210	145.00
57 code 30322210	223.00
85 code 30372210	357.00



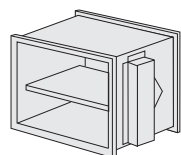
ducts and elbows to extend the exhaust kit (Ø 80 MEC 35) (Ø100 MEC 57÷85)

duct m 1	
Ø 80 code 37800035	47.00
Ø 100 code 37800050	52.00
elbow 90°	
Ø 80 code 37800030	42.00
Ø 100 code 37800031	42.00
elbow 45°	
Ø 80 code 37800032	42.00
Ø 100 code 37800034	42.00
elbow with condensate drain	
Ø 80 code 37800037	47.00
Ø 100 code 37800039	52.00



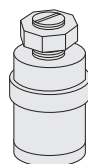
vibration damper for ducting

model	
35 code 30172230	114.00
57 code 30322230	171.00
85 code 30372230	197.00



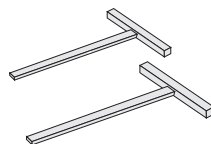
fire barrier air lock REI 120 for insertion in ducts

model	
35 code 30172205	512.00
57 code 30322205	620.00
85 code 30372205	724.00



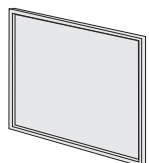
plug for fume uptake hole code 30170057

7.00



support shelves code 30240090

73.00



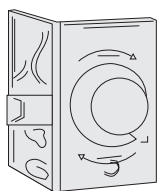
air intake filter

model	
35 code 30175610	37.00
57 code 30325610	47.00
85 code 30375610	62.00

perforated polyethylene pipe Ø 400 mm length 25 m when ordering the pipe for MEC 85 specify 2 openings

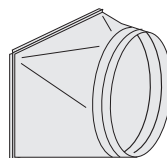
code 10152205

197.00



thermostat switch to regulate minimum centrifugal fan speed according to outside air temperature

model	
35÷85 code 30242010	52.00



circular connection opening for air delivery polyethylene duct

model	
35 code 30170065	176.00
57 code 30320065	236.00
(2 openings) cod. 30370065	300.00

